



Upper Limb MSK Ultrasound Course - Adelaide

Day 1 - Saturday 12 April 2025

SAT 12 April 2025
12.00 - 17.45 ACST
Registration opens 12.00

VENUE

Radiology SA
257 Fullarton Road
Parkside, SA, 5063

FACULTY

Anita Lee
Nathan Armstrong
Peter Esselbach
Andrew Spurrier



10.75 CPD Points

REGISTER ONLINE
asum.com.au/events

Registration closes:
Friday 6 April 2025

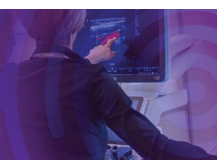
ENQUIRIES

Phone: (02) 9438 2078
Email: events@asum.com.au

START ACST	TOPIC
12.00	Registration with <i>light lunch</i> Welcome and Introduction to Teaching Faculty
12.30	ASUM and CCPU requirements for Rheumatology module with pre-test for Upper Limb joints
12.45	Basic MSUS Physics and Artefacts in MSUS
13.15	Basic MSUS Sono-anatomy (synovium, tendon, ligaments, bone, cartilage, nerves)
13.30	Basic image optimisation, setting up machine and pitfalls - Andrew Spurrier
14.00	US hand and wrist lecture (standardised scanning, basic pathological findings) including live demo
15.00	Supervised scanning hands and wrists (breakout groups)
15.45	Afternoon Tea
16.15	US elbow lecture (standardised scanning, basic pathological findings) including live demo
17.00	Supervised scanning elbows (breakout groups)
17.45	Day 1 Close



A comprehensive program
of CPD & Events
to continue your professional development.





Partner Events



ASUM
CPD and Events

Upper Limb MSK Ultrasound Course - Adelaide

Day 2 - Sunday 13 April 2025

SUN 13 April 2025
08.30—16.30 ACST

VENUE

Radiology SA
257 Fullarton Road
Parkside, SA, 5063

FACULTY

Anita Lee
Nathan Armstrong
Peter Esselbach
Andrew Spurrier



10.75 CPD Points

REGISTER ONLINE

asum.com.au/events

Registration closes:

Friday 6 April 2025

ENQUIRIES

Phone: (02) 9438 2078

Email: events@asum.com.au

START ACST	TOPIC
08.30	MSUS in inflammatory arthritis Part One (rheumatoid/spondyloarthropathy/crystal)
09.30	US shoulder lecture (standardised scanning, basic pathological findings) with live demo
10.30	Morning Tea
11.00	Supervised scanning shoulders (breakout groups)
12.30	Lunch
13.30	Supervised scanning upper limbs (breakout groups)
15.00	Afternoon Tea
15.30	Upper Limb Images Quiz post-test: normal sonoanatomy and pathology
16.00	Survey and Q&A
16.30	Meeting Close



Inspired by patients.
Driven by science.



GE HealthCare



A comprehensive program
of CPD & Events
to continue your professional development.

